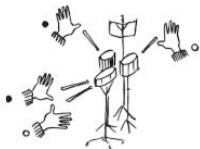


## LE SABLIER

## THE SANDGLASS

© Didier Lainé, 2010. Tous droits réservés.  
Toute réimpression, réédition ou utilisation  
sans autorisation écrite est formellement  
interdite.



Petit tom à droite joué par la main droite  
Grand tom à gauche joué par la main gauche  
La caisse claire sera jouée avec les deux mains.

*Little tom on the right, played with the right hand  
Large tom on the left side, played with the left hand  
Play the side drum with both hands.*

PETIT TOM

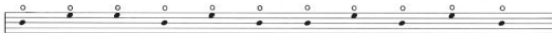


CAISSE CLAIRE

GROS TOM

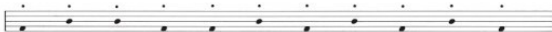
Jouons avec la main droite très lentement. La main droite sera notée : ○

*Let's play very slowly with the right hand. The right hand is marked with : ○*



Jouons avec la main gauche toujours très lentement. La main gauche sera notée : ▲

*Let's play also very slowly with the left hand. The left hand is marked with : ▲*



Maintenant nous allons mélanger les mains ainsi nous pourrions jouer sur tous les toms.

Now we are going to play with both hands, so that we'll be able to play all toms.

©

Dans ce que nous venons de jouer la longueur des notes n'importait pas : nous allons la mesurer en partant de la note la plus longue : la ronde.

In the above exercise, the note length didn't matter : now we are going to measure it from the longest note : the semi-breve.

1 et 2 et 3 et 4 et

1 et 2 et 3 et 4 et

I Nous allons jouer des mesures à 4 We are going to play in four

a

1 et 2 et 3 et 4 et 1 et 2 et 3 et 4 et 1 et 2 et 3 et 4 et

b

1 et 2 et 3 et 4 et 1 et 2 et 3 et 4 et 1 et 2 et 3 et 4 et

c

1 et 2 et 3 et 4 et 1 et 2 et 3 et 4 et 1 et 2 et 3 et 4 et

d

1 et 2 et 3 et 4 et 1 et 2 et 3 et 4 et 1 et 2 et 3 et 4 et

La main droite commence.

*Start with the right hand.***I**

Exercise I consists of six staves of music in 4/4 time. The first staff begins with a treble clef and a 4/4 time signature. The music is written in a single melodic line with eighth notes and quarter notes. Circled dots are placed above the notes in the first two measures of each staff, indicating the starting point for the right hand. The exercise is divided into three measures per staff, with a repeat sign at the end of the sixth staff.

La main gauche commence.

*Start with the left hand.***II**

Exercise II consists of six staves of music in 4/4 time. The first staff begins with a treble clef and a 4/4 time signature. The music is written in a single melodic line with eighth notes and quarter notes. Circled dots are placed above the notes in the first two measures of each staff, indicating the starting point for the left hand. The exercise is divided into three measures per staff, with a repeat sign at the end of the sixth staff.

Exercices sans doigtés. L'élève, en tenant compte des tons, devra lui-même écrire les doigtés.

*Exercises without any sticking. The student writes the stickings himself.*

①

3/4

②

3/4

③

3/4

④

2/4



## LE MOULIN

En déplaçant le doublé nous allons obtenir plusieurs doigts.



## PARADIDDLE

By sliding the doubling, it's possible to obtain several stickings.

① au début



② au milieu



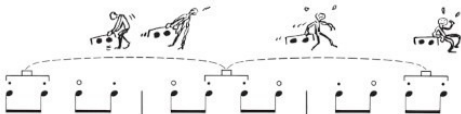
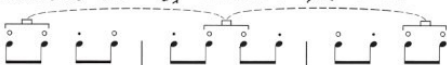
③ à la fin



① at the beginning

② in the middle

③ at the end



Présentation des trois doigts du moulin.

Presentation of the three paradiddle stickings.



## GIGUE

## JIG

Musical score for Gigue/Jig, featuring Vibraphone. The piece is in 4/4 time and B-flat major. The score consists of three systems of music. The first system begins with a double bar line and a key signature change to B-flat major. The first staff is marked *mf*. The second system begins with a double bar line and a key signature change to E-flat major. The first staff is marked *f*. The third system begins with a double bar line and a key signature change to B-flat major. The first staff is marked *p*, the second *mf*, and the third *f*. The piece concludes with a double bar line.

## MARCHE

## MARCH

Musical score for Marche/March, featuring Marimba. The piece is in 2/4 time and B-flat major. The score consists of three systems of music. The first system begins with a double bar line and a key signature change to B-flat major. The first staff is marked *p*. The second system begins with a double bar line and a key signature change to E-flat major. The first staff is marked *f*. The third system begins with a double bar line and a key signature change to B-flat major. The first staff is marked *mf*, and the second *p*. The piece concludes with a double bar line.